

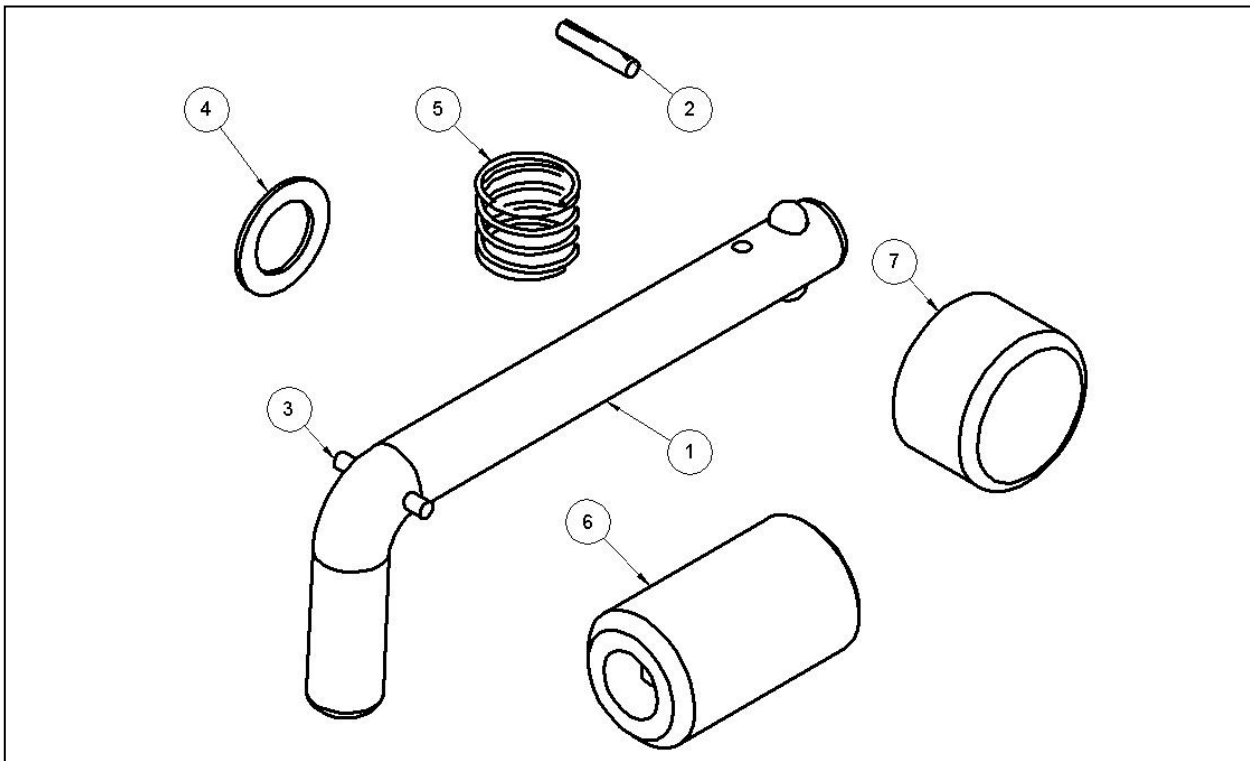


## FITTING INSTRUCTIONS

### 993013 - DUOFIT LEVER COUPLINGS – SAFETY LOCKING PIN WITH ANTI THEFT LOCK BARREL

This locking kit is designed for use with the 993973 Duofit Lever Coupling and 993976 Duofit Lever Coupling (Wide Body). The instructions below should be carefully followed to ensure correct installation and use. Failure to follow the instructions below may lead to disconnection of the coupling from the trailer which could result in serious injury or property damage.

The contents included in the kit are as follows:

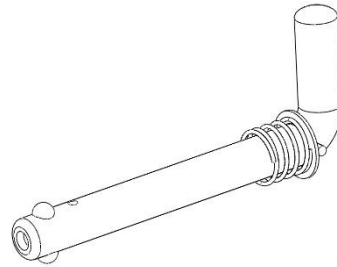


ITEM	DESCRIPTION	QTY
1	SAFETY LOCK PIN ½"	1
2	PIN M3 x 16	1
3	PIN M3 x 20	1
4	WASHER	1
5	SPRING	1
6	LOCK HEAD	1
7	RUBBER CAP	1



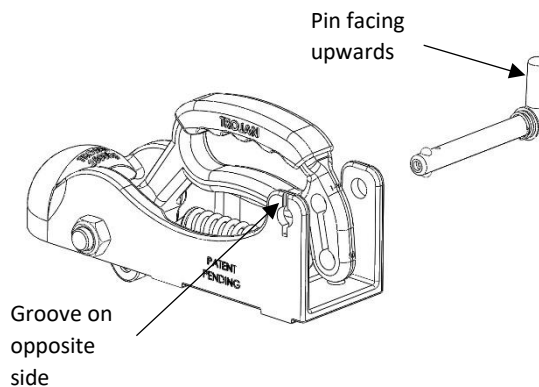
## FITTING INSTRUCTIONS

1. Place the washer and the compression spring over the safety lock pin so they sit up against the M3x20 pin (already installed in the locking pin) as shown

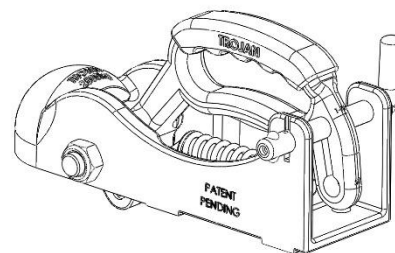


2. Orient the safety lock pin such that the bent arm of the pin is facing upwards and the pin is on the opposite side of the coupling to the hole with the groove feature as shown.

**WARNING: Orientation of the safety lock pin is critical to ensure correct operation of the coupling.**



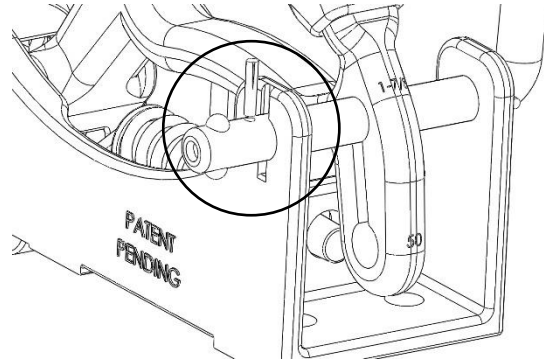
3. Lift the coupling handle up slightly to allow the pin to pass through one of the holes in the handle (note for the purposes of pin installation it doesn't matter if the top or bottom hole is used) all the way through the opposite hole in the coupling body. The spring on the lock pin should now be in contact with the coupling body. Reconfirm the bent arm of the pin is facing upwards per step 2.



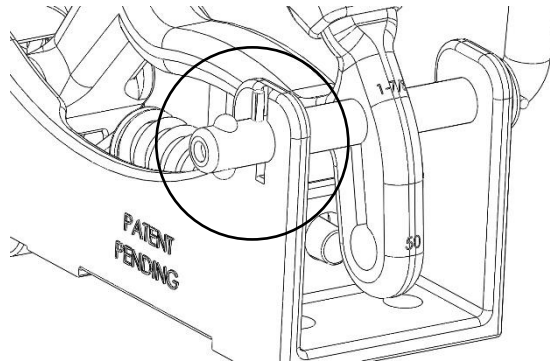


## FITTING INSTRUCTIONS

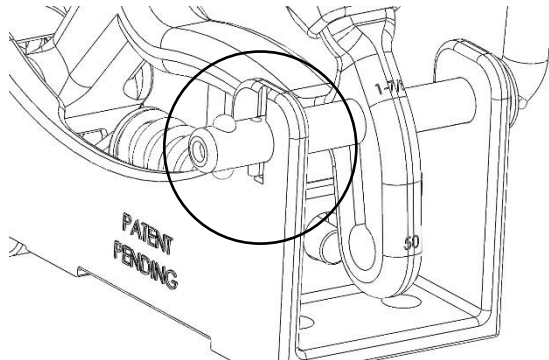
4. While compressing the safety lock pin spring to maximise safety lock pin protrusion through the coupling body, place the M3 pin into the hole provided in the safety lock pin such that the grooved end is sitting out of the safety lock pin.



5. Push the M3 pin by hand so that it locates firmly inside the hole in the safety lock pin. Note that most of the grooved end of the pin should still be visible after this step is completed.



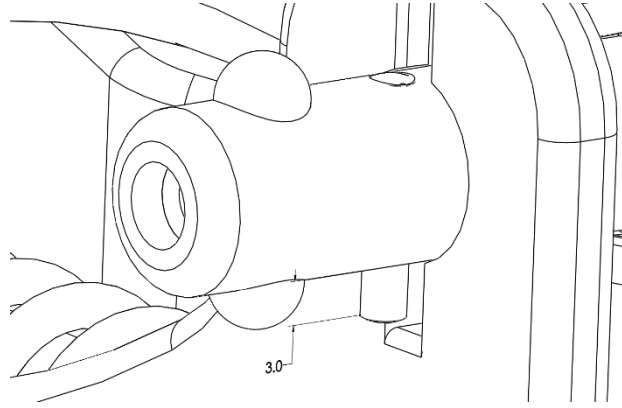
6. Using a hammer (and punch if necessary), tap the top of the M3 pin until it sits flush with the upward facing safety locking pin surface.





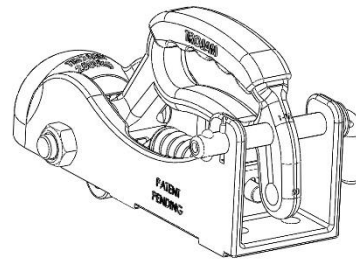
## FITTING INSTRUCTIONS

7. A correctly installed M3 pin will protrude approximately 3 mm out the opposite side of the safety lock pin



8. Rotate the safety lock pin 180° so that the M3 pin locates in the groove in the body of the coupling. The bent arm of the safety lock pin should now be facing downward.

Upon completion of this step, the coupling can be used for towing as normal either with or without the lock barrel installed.



9. The lock barrel can be fitted to the end of the safety lock pin as shown. Use the rubber cap provided over the end of the lock barrel to prevent ingress of contaminants.

